

The New Revised
Abridged
Oxford English Dictionary
of
Bootycandy

First Edition

WELCOME TO WOOLLY

Was there ever a better title than *Bootycandy*? With this outrageous hybrid word, playwright/director Robert O'Hara announces his intention to test whatever limits still surround our talk about sexuality. And he provides the perfect climax to our season-long "striptease of your subconscious."

The striptease began with *In the Next Room or the vibrator play*, Sarah Ruhl's electric ode to the desires we conceal. In *House of Gold*, Gregory S. Moss plumbed our tendency to project sexual images onto children. And Luis Alfaro staged the "mother" of all taboo love affairs in his steamy *Oedipus el Rey*.

Bootycandy strips off the final wrapping over our sexuality: language. How do the words we teach kids about their bodies shape their adult lives? Why do we place labels onto each other with respect to gender, race, sexual orientation? What happens when our identities slip outside their pigeonholes? What would it mean to truly reveal ourselves? And how much revelation is too much, in life and on the stage? We'll be exploring these questions and more, in partnership with Capital Pride, Speakeasy DC, and many other members of our community—and we invite you to join us in the theatre and online.

We've enjoyed the revealing conversations you've shared with us throughout this boundary-pushing season. And we're looking forward to more close encounters just ahead. *Clybourne Park* returns this summer, on the heels of winning the Pulitzer Prize and the Helen Hayes Award for Outstanding Resident Play. And Season 32 arrives in the fall—five dazzling new works exploring the Apocalypse, with all the hopes, fears, laughs, and dreams it inspires. *Does our civilization have an expiration date? And what comes after?* There will be much more to talk about!

**HOWARD
SHALWITZ**
ARTISTIC
DIRECTOR



WOOLLY MAMMOTH THEATRE COMPANY

HOWARD SHALWITZ

Artistic Director

JEFFREY HERRMANN

Managing Director

present



BOOTY CANDY

WRITTEN AND DIRECTED BY
ROBERT O'HARA

Set Designer...Tom Kamm
Costume Designer...Kate Turner-Walker
Lighting Designer...Colin K. Bills
Sound Designer...Lindsay Jones
Properties Master...Jennifer Sheetz
Dramaturg...Miriam Weisfeld
Stage Manager...William E. Cruttenden III*

Actor 1...Jessica Frances Dukes *+
Actor 2...Phillip James Brannon *
Actor 3...Laiona Michelle*
Actor 4...Lance Coadie Williams*
Actor 5...Sean Meehan*

* Member, Actors' Equity Association
+ Woolly Company Member

**This production of *Bootycandy*
is sponsored in part by:**

Kenneth W. Crow & Basil Halabi
Lis & Kevin Driscoll
Melissa Galetto
Julie Rosenthal & Mark McCaffrey
Grant & Sharon Thompson

Catering Sponsor



Restaurant Sponsor



Media Sponsor



PLEASE TURN OFF ALL ELECTRONIC DEVICES.

The video and/or audio recording of this performance by any means whatsoever is strictly prohibited.

There will be a 15 minute intermission

The New Revised Abridged Oxford English Dictionary of *Bootycandy*

Compiled by Tom Bonner, Alli Houseworth, Maura Krause,
Robert O'Hara, and Miriam Weisfeld

Edited by Alli Houseworth and Miriam Weisfeld

Audience: *noun* 1) an opportunity to be heard 2) the witness to a performance 3) you: _____ (your definition here).

Autobiographical: *adj.* 1) based upon the experiences of the author.

Board of Directors: *noun* 1) a group of trustees responsible for overseeing the governance of an organization 2) infinitely patient individuals who tolerate and even encourage wild risk-taking by Woolly Mammoth artists and staff 3) Pete Miller, *President*; J. Chris Babb, *Vice President*; Linette S. Hwu, *Vice President*; Melissa L. Galetto, *Secretary*; Gerry Widdicombe, *Treasurer*; Donna Ari, Richard Buckley, William Caldwell, Lorraine Chickering, Richard C. Donaldson, Lis Driscoll, Joseph A. Dunne, Elizabeth Friedman, Wendy W. Hagen, Nancy Hartsock, Jeffrey Herrmann, Tom Leahey, Karen Lefkowitz, Anthony Lupo, Catherine MacNeil Hollinger, Jeremy Rissi, Scott Schreiber, Howard Shalwitz, Grant P. Thompson.

Bootycandy: *noun* 1) childhood term for the male genitalia, used by the mother and grandmother of the gay playwright of this play you are about to watch.

Cast: *noun* 1) a throw of dice 2) an impression taken of an object with liquid or plastic 3) a group of actors in a play (*see also: Phillip James Brannon, Jessica Frances Dukes, Sean Meehan, Laiona Michelle, Lance Coadie Williams*).

Claque: *noun* 1) an entourage of opera fans who infuse a performance with their enthusiasm and expertise 2) French word for “slap” 3) a community of highly engaged Woolly audience members working to advance the theatre’s mission through its connectivity initiatives 4) Step Armah, Matt Berman, Eric Colchamiro, Margaux Delotte-Bennett, Elias El-Hage, Elizabeth El-Hage, Brandon Gryde, Ryan Michael Hayes, Piper Hendricks, Kathy English Holt, Manu Kumasi, Ben Noll, Rebecca Renard, Jessica Solomon, Penelope Spain, Susan Timmons, Jonathan Zucker (*see fig. 1*).

If I didn't define myself for myself, I would be crunched into other people's fantasies for me and eaten alive.

—Audre Lorde

Colin K. Bills: *noun* (b. 1975) 1) Lighting Designer for *Bootycandy* 2) Associate Artist at Woolly Mammoth Theatre Company 3) American responsible for the lighting of dozens of productions at Woolly, including *Oedipus el Rey*, *In the Next Room or the vibrator play*, *House of Gold*, *Clybourne Park*, *Full Circle*, *Eclipsed*, *Fever/Dream*, *Stunning*, *The Unmentionables*, *Dead Man's Cell Phone*, and *The Clean House*; recipient of three Helen Hayes Awards and a 2009 Princess Grace Fellowship in Theater; graduate of Dartmouth College 4) a husband to his beautiful wife Rachel.

“It is true that gender, race, and body type signal specific sociopolitical meanings—but it is also true that **these meanings are always shifting**. Art, fashion, and popular entertainment can lead the way. Therefore, to confront spectators with casting against type is to ask audiences to wonder what such casting means—and to wonder about their own place in various social hierarchies and circumstances; maybe even to inquire into their own personal situations.”

—Richard Schechner

The Colored Museum: *noun* 1) play by George C. Wolfe that premiered at New York's Public Theater in 1986 to great acclaim and subsequently transferred to Broadway. Its series of eleven “exhibits” subverted and satirized African American stereotypes. Spoofing well-respected works of art and lowbrow icons alike, Wolfe called it “an exorcism and a party.” *The New York Times* critic Frank Rich singled out the longest playlet in this series of short plays, titled “The Last Mama-in-the-Couch Play” as a “stinging parody” of Lorraine Hansberry's middle-

class, realistic drama *A Raisin in the Sun*, praising Wolfe for revealing “the cultural blind spots of blacks and whites alike.” 2) both an inspiration and a subject of satire for *Bootycandy*, Robert O'Hara's web of interconnected short plays.

Commitment ceremony: *noun* 1) a formal ceremony to affirm the partnership of a couple that cannot marry or does not wish to.

Conference: *noun* 1) a formal exchange of viewpoints 2) a phone call involving multiple participants, usually for the purpose of a meeting or gossip (*see fig. 2*).

Donor: *noun* 1) one who makes a philanthropic contribution 2) the source of a new substance 3) a generous patron who may be sitting next to you right now (*see fig. 3 and Appendix B*).

For Colored Girls Who Have Considered Suicide/When the Rainbow is Enuf: *noun* 1) play by Ntozake Shange that premiered at New York's Public Theater in 1976 and was celebrated for its moving and memorable portrayal of female African American experiences. Shange structured her play as a collection of poetry and prose portraits instead of a single unified narrative, creating multi-faceted views of how race and gender shaped the lives of her characters. *The New York Times* critic

Clive Barnes raved, “It could very easily have made me feel guilty at being white and male. It didn’t. It made me feel proud at being a member of the human race, and with the joyous discovery that a white man can have black sisters.” 2) both an inspiration and a subject of satire for *The Colored Museum*, George C. Wolfe’s collection of short plays, which is both an inspiration and a subject of satire for Robert O’Hara’s *Bootycandy*.

Gender: *noun* 1) subclass of language partly based on a characteristic such as sex 2) the behavioral, cultural, or psychological traits associated with a particular sex.

Identity: *noun* 1) the distinguishing character or trait of an individual.

Jackie Collins: *noun* (b. 1937) 1) English novelist and sister of the actress Joan Collins. Her novels depict love affairs, often set among the world of organized crime. All twenty-seven of her books have appeared on *The New York Times* bestseller list, and eight of them have been adapted for the screen (see fig. 4).

“We live in safe houses of identity. So what I want to suggest to the new generation, younger kids, is hey guys how about if we come out of these little camps. How about it you come out of the safe house of your identity, where you are you gonna end up? So it’s kind of fancy words, but I said **you’re gonna be in the crossroads of ambiguity**. And guess what, you can’t go back to the house you came out of. But out here in the middle where there is no house, in this crossroads of ambiguity, we might be able to get something really fascinating happening.”

—Anna Deveare Smith

Repertory Theater: *The Piano Lesson*; Cleveland Playhouse: *The Trip to Bountiful*; Geva Theatre, NY: *The Piano Lesson*; Theater J: *In Darfur*; the Kennedy Center: *Unleashed: The Secret Lives of White House Pets*, *Izzy Iccarus fell off the World*;

“I was raised around heterosexuals, as all heterosexuals are, that’s where us gay people come from... you heterosexuals.”

—Ellen DeGeneres

Jessica Frances Dukes: *noun* (b. 19??) 1) actor who will appear as ACTOR 1 in tonight’s performance of *Bootycandy* 2) a Company Member at Woolly Mammoth Theatre Company. Her Woolly credits include *In the Next Room or the vibrator play*, *Full Circle*, *Eclipsed*, *Fever/Dream*, *Antebellum*, and *Starving*. Her regional work includes Studio Theatre: *Passing Strange*, *Caroline, or Change*; Round House Theatre: *The Trip to Bountiful*, *Permanent Collection*; Ford’s Theatre in association with African Continuum Theater: *Jitney*; The Lincoln Theatre: *Sanctified*; Indiana

Tribute Productions in association with African Continuum Theatre: *Spunk* (Helen Hayes nomination for Outstanding Lead Actress); Horizon Theatre Company, GA: *The Bluest Eye*; Theater Alliance: *The Bluest Eye*, *Insurrection: Holding History*; Washington Stage Guild: *Fanny’s First Play*; and African Continuum Theatre: *The Story*. Jessica earned her MFA from The Catholic University of America and teaches Fundamentals of Acting at Montgomery College (see fig. 5).

Kate Turner-Walker: *noun* (b. 1974) 1) Costume Designer for *Bootycandy* 2) she is delighted to return to Woolly Mammoth (*Dead Man’s Cell Phone*, *Starving*, and *Cooking with Elvis*, among others) and to collaborate with Robert O’Hara on this time-travelling, costume-changing extravaganza. A native of Washington, DC, Kate frequently designs for the Kennedy Center Theatre for Young Audiences, Folger Theatre, Studio Theatre, and Round House Theatre. As Art Director for two episodes of TLC’s reality show *DC Cupcakes*, she recently designed and oversaw the construction of a life sized wedding dress and a giant bra, both made entirely of cupcakes. In addition to her work as a designer, Kate has enjoyed experiences on draping teams at Barbara Matera, Ltd. and Parsons-Meares, and as a dresser for fashion shows in Paris. A professor of Costume Design at George Washington University, Kate is also a two-time nominee for the Helen Hayes Award for Outstanding Costume Design and a member of United Scenic Artists.

Laiona Michelle: *noun* (b. 19??) 1) actor who will appear as ACTOR 3 in tonight’s performance of *Bootycandy* 2) her Off-Broadway credits include *The Black Nativity* at the Duke on 42nd Street and *One* at 59e59 Theaters. Her regional work includes *Constant Star Tour* (Recipient of the 2005 NAACP Hollywood Award and a 2004 Barrymore Award); Merrimack Repertory Theatre: *Dinah Was* (Nominated for Best Leading Actress in a Musical by the IRNE Awards); Arena Stage: *Yellowman* (Nominated for a Helen Hayes Award); New Repertory Theatre: *Stonewall Jackson House* (Nominated for Best Supporting Actress by the IRNE Awards). Other theatre credits include Alabama Shakespeare Festival, Cincinnati Playhouse in the Park, Colorado Shakespeare Festival, Westport Country Playhouse, Delaware Theatre Company, Laguna Playhouse, Syracuse Theatre Company, Florida Stage, Virginia Stage Company, and The Shakespeare Theatre Company, among others. Her international credits include *Celebrate the Possibilities* for the Winter Olympics in Seoul, Korea. Her television and film credits include *Law & Order*, *All My Children*, and *LIFT*. Laiona received her MFA from Brandeis University in 2000 (see fig. 6).

Lance Coadie Williams: *noun* (b. 19??) 1) actor who will appear as ACTOR 4 in tonight’s performance of *Bootycandy* 2) he is making his Woolly Mammoth debut with *Bootycandy*. His credits include Studio Theatre: *Marcus or the Sweet of Sweet*; The Shakespeare Theatre Company: *The Oedipus Plays*; Roundabout Theatre: *Fences*; Everyman Theatre/Repstage: *The Children’s Hour* (2005 Greater Baltimore Theatre Award for Outstanding Actor); Everyman Theatre: *My Children! My Africa!*, *Blues for an Alabama Sky*, and *Fences*; Baltimore Shakespeare Festival: title role in *Hamlet*; Berkshire Theatre Festival: *Love’s Fire* and *Shoot the Piano Player*, and HBO’s *The Wire*. Lance received his BFA from SUNY Purchase Conservatory of Theatre Arts and Film and is also a graduate of the Baltimore School for the Arts (see fig. 7).

Lindsay Jones: *noun* (b. 19??) 1) Original Music/Sound Designer for *Bootycandy* 2) his Off-Broadway experience includes Union Square/Westside Theatres: *Through the Night*; Public Theater: *The Brother/Sister Plays*; Playwrights Horizons: *The Burnt Part Boys*; New York Theatre Workshop: *Top Secret*, and many others. His regional experience includes work with McCarter Theatre, Arena Stage, Goodman Theatre, Steppenwolf Theatre Company, Hartford Stage, Guthrie Theater, Chicago Shakespeare Theater, South Coast Repertory, CENTERSTAGE, A.C.T., Seattle Repertory Theatre, Utah Shakespeare Festival, Northlight Theatre, Milwaukee Repertory Theater, Geva Theatre, and many others. Lindsay has done International productions in Austria, Zimbabwe, South Africa, Canada, Scotland, and with the Royal Shakespeare Company in England. He has received five Joseph Jefferson Awards and 15 nominations, two Ovation Awards and three nominations, Los Angeles and San Diego Drama Critics Circle Awards along with award nominations for Drama Desk Awards, Henry Hewes Design Awards, AUDELCO Awards, and Barrymore Awards. Lindsay was also the first sound designer to win the Michael Maggio Emerging Designer Award. Recent TV/Film scoring work includes *Family Practice* for Sony Pictures/Lifetime Television, and *A Note of Triumph* (2006 Academy Award winner, Best Documentary, Short Subject) for HBO Films. For more, go to www.lindsayjones.com.

Matthew Shepard: *noun* (1976-1998) 1) 21-year-old gay college student who was fatally beaten and left tied to a fence in Laramie, Wyoming in 1998. Accused killer Aaron McKinney's lawyers attempted a "gay panic defense," arguing that McKinney's fear of homosexual advances had caused him to overreact to his encounter with Shepard in a bar. The defense was unsuccessful, and both McKinney and his co-defendant Russell Henderson each received two consecutive life sentences for the murder. Shepard has become a galvanizing figure for the gay rights movement. When the trial was picketed by anti-gay protesters, friends of Shepard dressed as angels and shielded his family with giant white wings. Shepard's story has inspired many artistic responses including Moises Kaufman's play *The Laramie Project*. In 2009, Congress passed the Matthew Shepard and James Byrd, Jr. Hate Crimes Prevention Act, which allows for federal prosecution of hate crimes when states fail to act. Shepard's family continues to advocate for LGBT rights via the Matthew Shepard Foundation (see fig. 8).

Michael Jackson: *noun* (1958-2009) 1) singer, dancer, producer, and philanthropist hailed as the "King of Pop." Jackson first performed in 1964 as the prodigious youngest member of the Jackson Five and soon established a solo career that continued until his sudden death in 2009. As a performer and an international icon, he often blurred the boundaries of race, gender, age, and sexual orientation. He was tried and acquitted for child sexual abuse in 2005, and the scandal added even more complexities to his enigmatic persona. The many tributes following his death celebrated his rise from a child in an abusive working-class home in Gary, Indiana to an artistic genius who transcended racial barriers to achieve superstardom (see fig. 9).

Miriam Weisfeld: *noun* (b. 19??) 1) Production Dramaturg for *Bootycandy* 2) the Director of Artistic Development at Woolly, where she has dramaturged World Premieres including David Adjmi's *Stunning*, Robert O'Hara's *Antebellum*, and

fig. 1



The Claque is a community of highly engaged Woolly audience members working to advance the theatre's mission through its connectivity initiatives. Interested in joining up? Send an e-mail to claque@woollymammoth.net.

See an article, image, video, soundbite, or anything that reminds you of **Bootycandy**? E-mail the link to claque@woollymammoth.net and we'll post it on **Woolly-pedia**, the brand-new crowd-sourced audience blog.

Visit **Woolly-pedia** at woolly-pedia.tumblr.com.



fig. 2



fig. 3

Our productions and programming are only possible with the generous support of our many contributors, who will combine this season to provide half of our \$4 million budget. We want to take this opportunity to recognize and thank our largest contributors for their tremendous commitment to Woolly Mammoth. We couldn't do it without you!

ARTISTIC DIRECTOR'S CIRCLE

- | | | |
|--|--|--|
| American Airlines | EmcArts' Innovation Lab and Doris Duke Charitable Foundation | Joan & David Maxwell |
| The Andrew W. Mellon Foundation | The Eugene & Agnes E. Meyer Foundation | Pete Miller & Sara Cormeny |
| Anne & Ronald Abramson | George Sexton Associates | The Morris and Gwendolyn Cafritz Foundation |
| Anonymous (2) | Michael Klein & Joan Fabry | National Capital Arts & Cultural Affairs Program |
| AstraZeneca Pharmaceuticals, LP | Arlene & Robert Kogod | National Endowment for the Arts |
| J. Chris Babb & James Martin | Tom Leahey | Pillsbury Winthrop Shaw Pittman Foundation |
| Louis & Bonnie Cohen | Catherine MacNeil Hollinger & Mark Hollinger | The Shubert Foundation |
| D.C. Commission on the Arts and Humanities | MARPAT Foundation | Gerry Widdicombe |
| Sheryl & Rick Donaldson | | |

PLAYWRIGHT'S CIRCLE

- | | | |
|----------------------------------|----------------------------|----------------------------------|
| David S. Cohen & Craig A. Benson | Melissa Galetto | Judith Morris & Marvin Weissberg |
| The Dobranski Foundation | Miles Gilburne & Nina Zolt | Judy & Leo Zickler |
| Eli Lilly and Company | Linette S. Hwu | |
| | PhRMA | |

SEASON SPONSORS

- | | | |
|--------------------------------|---|------------------------|
| Donna Ari | Jeffrey P. Cunard | The Group Tour Company |
| Mark & Cindy Aron | The Dallas Morse Coors Foundation for the Performing Arts | Omni Shoreham Hotel |
| Susan L. & Dixon M. Butler | Davis Wright Tremaine LLP | PEPCO |
| Capitol Counsel, LLC | Elizabeth & Paul L. Friedman | Julie Rios |
| Kenneth W. Crow & Basil Halabi | | Shirley Shalwitz |
| | | Dave & Joy Willey |

This list represents giving from December 1, 2009 through May 4, 2011.

fig. 4



fig. 5

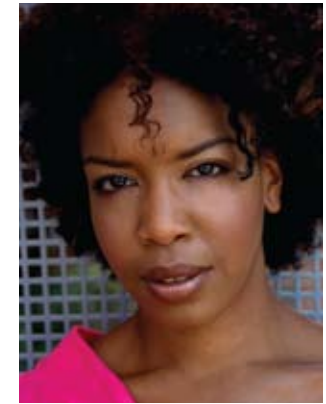


fig. 6



fig. 7



fig. 8



fig. 9



fig. 10



fig. 11



fig. 12



fig. 13



fig. 14



fig. 15



fig. 17



fig. 16



Policy Wonk.



Party Monster.



Everyone has a story to tell.

We're here to tell them.

METROWEEKLY

Every Thursday in print. Every day online.

METROWEEKLY.COM poliglot lastword. spotlight

THE MOSCOWS OF NANTUCKET

May 11—June 12

by Sam Forman

Directed by Shirley Serotsky

*A World Premiere
Comedy from the
Helen Hayes Award
nominated author
of *The Rise and Fall
of Annie Hall**

SAVE \$10
With Code
'WOOLLY'



Featuring
James Flanagan, Michael Glenn
Heather Haney, Bob Rogerson
Susan Rome and Amal Saade



For Tickets and Information:

(800) 494-TIXS • theaterj.org • 16th & Q Streets, NW

RANK, IN ORDER OF DANGER:

1. REVEALING A SECRET ABOUT YOUR SEXUALITY.
2. ZOMBIE ATTACKS.
3. NOT SUBSCRIBING TO WOOLLY'S 32ND SEASON.

SEASON 32

IS SURE TO DELIVER A **BIG BANG!**

SUBSCRIPTIONS ARE NOW ON SALE,
AND START AT JUST \$170.

VISIT OUR BOX OFFICE
OR CALL 202-393-3939 TO ORDER TODAY.

(YOU DON'T WANT THE WORLD TO END WITHOUT
BEING A MEMBER OF OUR FAMILY. TRUST US.)

Answers: 1) Not subscribing 2) Zombies 3) Secrets

Get in here!
Hurry up!
Have fun!



900 U Street, NW
 Washington, DC 20001



202.332.NELL (6355)
 NelliesSportsBar.com

S SHAKESPEARE THEATRE COMPANY

Nobel Prize Winner
 Harold Pinter's

*Some memories
 never happened*

Old Times

directed by Michael Kahn
 Now Playing—July 3
 Lansburgh Theatre



Photos of Tracy Lynn Middendorf, Holly Twyford and Steven Culp.

Starring Steven Culp, Tracy Lynn Middendorf and Holly Twyford.

Call **202.547.1122** or visit **ShakespeareTheatre.org** Production Support has been provided by the **Artistic Leadership Fund**

Dania Gurira's *Eclipsed* (all of which were nominated for the Charles MacArthur Award for Outstanding New Play). Her other credits include work for New York Theatre Workshop (projects with JoAnne Akalaitis, Ivo van Hove, and Universes); A.R.T. (with Robert Woodruff, Anne Bogart, and Paula Vogel); Two River Theatre/Folger Theatre (with Teller); Steppenwolf Theatre; Actors Theatre of Louisville; Lookingglass Theatre; and NovaStage, Toronto. She has lectured on theatre at Harvard University, MIT, Suffolk University, Northwestern University, the Kennedy Center, and the Moscow Art Theatre School. She holds an MFA in Dramaturgy from the American Repertory Theatre/Moscow Art Theatre School Institute at Harvard University. Her essays on theatre and life in Moscow will be published by MXAT in an anthology next year.

Phillip James Brannon: *noun* (b. 1984) 1) actor who will appear as ACTOR 2 in tonight's performance of *Boo! Candy* 2) he recently appeared at Chicago Shakespeare Theater as Touchstone in *As You Like It*. Other Chicago credits include Steppenwolf Theatre Company: Oshoosi/Egun/Egun/Tyrell in *The Brother/Sister Plays*; Chicago Shakespeare Theater: *Amadeus*, *Macbeth*, and *Richard III*; Goodman Theatre: *The Ballad of Emmett Till*, *The Cook*, *Oedipus Complex*, *A Christmas Carol*, and *Joan Dark* (premiered in Linz, Austria and produced in conjunction with the Linz '09 Festival); Court Theatre: Aaron the Moor in *Titus Andronicus*; Congo Square Theatre Company: *Elmina's Kitchen*; Remy Bumppo Theatre Company: *An Immigrant Class*; InFusion Theatre Company: *The Last Supper*. Regional credits include Kansas City Repertory Theatre: *Harriet Jacobs*; Firebelly Productions: *Of Mice and Men*, and *Waiting for Godot* that also played in Prague, Czech Republic. He also appears in the film *Contagion*, to be released later this year. Phillip holds a BFA in Acting from The Theatre School at DePaul University (see fig. 10).

Playwright/Director: *noun* 1) one who writes and oversees the staging of a play.

Race: *noun* 1) the act of running 2) a way of categorizing people.

Radio Woolly: *noun* 1) bi-monthly podcast series featuring discussions with artists, Woolly staff, and expert guest speakers that is available for download on iTunes.

Record: *noun* 1) vinyl disk with grooves which produce sound when revolved and vibrated with a needle on a record player 2) the documentation, impression, or memory of a past event. *verb* 1) to write down, make an audio impression of, or otherwise document an important event for future reference.

Robert O'Hara: *noun* (b. 1970) 1) a screw and a nut 2) the gay playwright and director of this play you are about to see; received a 2010 Helen Hayes Award for Outstanding New Play for *Antebellum* and an OBIE Award for directing

**“Human salvation lies
 in the hands of the
 creatively maladjusted.”**
 —Dr. Martin Luther King, Jr.

the World Premiere of *In the Continuum* at Primary Stages. His play *Etiquette of Vigilance* was recently produced by Steppenwolf Theatre Company in their First Look Festival. He directed the World Premiere of the *The Brother/Sister*

“Blackness is slippery—ever beyond the reach of one’s grasp. Once you think you have a hold on it, it transforms into something else and travels in another direction. Often, it is during times of crisis (social, cultural, or political) when the authenticity of older versions of blackness is called into question. These crises set the stage for ‘acting out’ identity politics, occasions when those excluded from the parameters of blackness invent their own.”

—E. Patrick Johnson

Plays (Part 2) in a Co-Production of McCarter Theatre and New York Shakespeare Festival. He wrote and directed the World Premiere of *Insurrection: Holding History* at the New York Shakespeare Festival, which received the Oppenheimer Award for Best New American Play. Mr. O’Hara has directed at countless theaters including City Theater, Alliance Theater, American Conservatory Theater, Yale Repertory Theatre, Goodman Theatre, Guthrie Theater, Cincinnati Playhouse In The Park, Edinburgh Festival Fringe, The Market Theatre in Johannesburg, The Baxter Theatre Centre in Cape Town, The Culture Project, The Flea Theater, Athenaeum Theatre, and Philadelphia Theatre Company. He received his Directing MFA from Columbia University School of Arts and is currently an Adjunct Professor in

the Undergraduate Acting Program at the NYU/TISCH School of the Arts and recently released his film directing debut, *The Inheritance* (see fig. 11).

RuPaul: *noun* (b. 1960) 1) drag queen, actor, and singer/songwriter who gained visibility in the 1990s via a series of television, film, and musical appearances.

Sometimes known as RuPaul Charles, he is now a supermodel for MAC Cosmetics and host of the TV show *RuPaul’s Drag Race*, a reality program searching for America’s next drag superstar (see fig. 12).

Sean Meehan: *noun* (b. 1974) 1) actor who will appear as ACTOR 5 in tonight’s performance of *Bootycandy* 2) he graduated from the Trinity Repertory Conservatory in Providence, RI where he received his MFA in acting and was the recipient of the Richard Kavanaugh Fellowship. Since that time he has performed in various places, including

“It’s why we love actors, it’s why we love masks—because they suggest to us, I might be able to change. These **rigid ideas about myself** or about somebody else really might be able to **transform.**”

—Daniel Alexander Jones

HERE: *Next!*; Boston Theater Marathon: *What Strong Fences Make*; The New Group: *Mourning Becomes Electra*; La MaMa E.T.C.: *The G Word: For Those Born Later*; New York Classical Theatre: *Love’s Labour’s Lost* and *Macbeth*; The Repertory Theatre of St. Louis: *The Lieutenant of Inishmore*; Gloucester Stage Company: *The Widow’s Blind Date*; Virginia Stage Company: *Of Mice and Men*; Milwaukee Repertory Theater: *Cripple of Inishmaan*; Bread Loaf Theatre: *The Master Builder*; Indiana Repertory Theatre: *Ghosts*; Perishable Theatre: *Zoo Story*; and Trinity Repertory Company: *The Beauty Queen of Leenane*, *Othello*, and *A Christmas Carol*. On television he has been seen in *Rookies*, *The Good Wife*, *A Legal Mind*, *Law and Order*, *Law and Order: Criminal Intent*, *As the World Turns*, and has appeared in various commercials and films including *Room*, *The Undying*, *All Good Things*, and *The Taking of Pelham 1 2 3* (see fig. 13).

Sexual orientation: *noun* 1) the direction of one’s sexual attentions.

Special thanks: *noun* 1) expression of deep gratitude on the part of the theatre for the many resources, support, and general good karma sent by certain individuals during the making of this play. 2) Chad Beckhim, Adam Greenfield, Jonathan Goldfuss at ThinkFood Group, Partial Comfort Productions, Molly Pearson, Playwrights Horizons, KenYatta Rogers.

Staff: *noun* 1) a large stick used for walking, hitting people, or parting the sea 2) a highly sleep-deprived group of individuals charged with operating a theatre company.

Production Staff for *Bootycandy*:

Carpenters...Christian Sullivan	Asst. Sound Designer...Elisheba Ittoop
Scenic Painters...Sasha Goldstein	Asst. Dramaturg...Maura Krause
Electricians...Austin Byrd, Donray Cooper, Zach Dalton, Chris Hall, José Nuñez	Wardrobe Supervisor...Haley Raines
Video Engineer...Aaron Fisher	Lightboard Op/Asst. to Lighting Designer... Zach Dalton
Assts. to the Director...Sasha Bratt, Nick Loumos	Properties Assistant...Alisha Rider
	Deck Crew...Kayla Wright, José Nuñez

Woolly Mammoth Administrative Staff:

Managing Director...Jeffrey Herrmann	Connectivity Director...Rachel Grossman
General Manager...Brian Smith	Box Office Manager...Timmy Metzner
Business Manager...Allyson Quirico	Box Office Supervisors...Mia Branco, Bryan Joseph Lee, Ali Walton
Data Administration Manager...Jason A. Milner	Patron Services Reps...Amanda Credeur, Kirsten Hazelrig, Sara Lokossou, Cynthia Perdue, Jason Schlafstein, Caitlin Smith
Director of Marketing & Communications... Alli Houseworth	House Managers...Mia Branco, Julia Harman Cain, Max Freedman, José Nuñez, Jason Schlafstein, Ali Walton
Sales Manager...Zacory Boatright	Assistants...Cristina Alicea, Katie Boyles, Lee Matthews Daugherty, Max Freedman
Press & Digital Content Manager...Brooke Miller	Photographer...Stan Barouh
Graphic Design & Web Manager... Kate Ahern Loveric	Legal Advisor...Pillsbury Winthrop Shaw Pittman LLP
Development Manager, Annual Giving... Rachel Dutcher	
Development Manager, Special Events... Shelley Weber	
Campaign Associate...Jen Anthony	

Woolly Mammoth Artistic/Production Staff:

Artistic Director...Howard Shalwitz	Scenic Charge...Jason Edwards
Production Manager...Taryn Colberg-Staples	Master Carpenter...Joel Garcia
Director of Artistic Development... Miriam Weisfeld	Master Electrician...Ann Allan
Literary Manager...John M. Baker	Resident Sound Engineer/Video & Sound Board Operator...Alan Chaikin
Technical Director...Paul Bradley	Resident Asst. Stage Manager...Jason R. Caballero
Properties Master...Jennifer Sheetz	Assistants...Tom Bonner, Maura Krause, José Nuñez
Assistant Technical Director...Scott Little	

Show Art Concept & Design: *noun* 1) Kate Landis Loewengart & Judy Luke; Illustration © Ronald J. Cala II / i2i art (see fig. 14).

Tom Kamm: *noun* (b. 1954) 1) Set Designer for *Bootycandy* 2) he has designed over fifty projects for theatre, opera, dance, and television. His work includes seven projects by visionary director Robert Wilson as well as the World Premiere of Tony Kushner's *Angels in America* at the Eureka Theatre. He has designed architecture and interiors in all regions of the United States, including projects in New York, Illinois, California, and the Washington, DC metro area. Mr. Kamm holds a Master of Architecture degree from Yale School of Architecture and a Bachelor of Arts degree in drama from the University of California at San Diego. Mr. Kamm has also served as a full time faculty member at the University Of Illinois School of Architecture.

Union: *noun* 1) the joining together of two people 2) an association of individuals who work in the performing arts that is formed to look after employee interests and working conditions (see Appendix A).

William E. Cruttenden III: *noun* (b. 1982) 1) Production Stage Manager for *Bootycandy* 2) he is working on his fourteenth production at Woolly Mammoth. His Woolly credits include *Clybourne Park*, *Full Circle*, *BOOM!*, *Maria/Stuart*, *Measure For Pleasure*, and *No Child...* among others. His past credits include Off-Broadway: *Perfect Harmony*; Signature Theatre: *And The Curtain Rises*, *Sunset Boulevard*, *Chess*, and *I Am My Own Wife*; Shakespeare Theatre: *2010 Will Awards*; West Virginia Public Theatre: *Doubt*; Olney Theatre Center: *Is He Dead?*, *Bad Dates*, and *Of Mice and Men*; and Imagination Stage: *Twice Upon A Time*.

Woolly's Acting Company: *noun* (est. 1986) 1) group of extraordinarily talented actors recruited to join the Woolly family and fill around 40% of the roles in our plays. 2) Doug Brown, Jessica Frances Dukes, Daniel Escobar, Rick Foucheux, Grover Gardner, Kimberly Gilbert, Mitchell Hébert, Naomi Jacobson, Jason Kravits, Christopher Lane, Namu Lwanga, Sarah Marshall, Jennifer Mendenhall, Bruce Nelson, Kate Eastwood Norris, Nancy Robinette, Rob Leo Roy, Michael Russotto, Rhea Seehorn, Eric Sutton, Dawn Ursula, Michael Willis, *Gráinne Cassidy*, 1962-97.

Woolly Blog: *noun* 1) online collection of short articles written by Woolly staff, artists, and community members about what happens behind the scenes and in our community that may be accessed at woollymammothblog.com.

Woolly Mammoth Theatre Company: *noun* (est. 1980) 1) the people who produce plays like *Bootycandy* 2) an explosive engagement with the audience 3) what else?_____.

Working Group: *noun* 1) a collaborative body of individuals from Woolly Mammoth's staff, Board, and Claque who meet regularly to develop and execute programming around *Bootycandy* 2) Step Armah, Bill Caldwell, Margaux Delotte-Bennett (*leader*), Joel Garcia, Zack Rosen, Amy Saidman, Scott Schreiber.

Appendix A: Theatrical Unions

Actors' Equity Association: *noun* (est. 1913) 1) national union established to protect the rights of stage actors and stage managers 2) Actor's Equity Association (AEA), founded in 1913, represents more than 45,000 actors and stage managers in the United States. Equity seeks to advance, promote, and foster the art of live theatre as an essential component of our society. Equity negotiates wages and working conditions, providing a wide range of benefits, including health and pension plans. AEA is a member of the AFL-CIO, and is associated with FIA, an international organization of performing arts unions. The Equity emblem is our mark of excellence. For more information, visit www.actorsequity.org (see fig. 15).

Stage Directors and Choreographers Society: *noun* (est. 1959) 1) union for directors and choreographers dedicated to protecting their intellectual property (see fig. 16).

United Scenic Artists: *noun* (est. 1897) 1) labor union and professional association of designers, artists, and craftspeople organized to protect craft standards, working conditions, and wages for the entertainment and decorative arts industries 2) The costume, lighting, and sound designer of this production are represented by United Scenic Artists, Local USA-829 of the IATSE (see fig. 17).

Appendix B: Annual Fund Contributors

It takes a team—ranging from the director, to the actors, to the stage manager, to the box office—to bring each production to the stage. The same is true for our family of donors who combine each season to provide nearly \$2 million in cash and in-kind gifts. Each one helps to sustain Woolly Mammoth's mission and ensure the vitality of our artistic and audience connectivity programs. We thank the following contributors, those who made gifts valued at \$250 or more between December 1, 2009 and May 4, 2011, for their support. To see our complete roster of supporters, please visit us online at woollymammoth.net.

Anonymous (5) 701 Restaurant Mary Abbajay & Christopher Marlow ABC7/WJLA-TV & NewsChannel 8 Anne & Ronald Abramson Accenture Actors Theatre of Louisville Adler Family Fund Jeffery Ahl & Toby Port Air Combat, USA Shannon & Michael Alford Riaz Ali Jo & John Allen Alliance Française de Washington The Alper Family Foundation	American Airlines Amtrak Gabriela Anaya & Bruce Tanzer The Andrew W. Mellon Foundation The Anthony Lucas- Spindletop Foundation Jen Anthony Alison & Mike Anway Arent Fox LLP Donna Ari Catherine & Paul Armington Arnold & Porter LLP Tim Arnold Mark & Cindy Aron AstraZeneca Pharmaceuticals, LP	J. Chris Babb & James Martin Susan Baer, PhD & Bruce Thornburg Bailey Law Group Orrin & Cheryl Baird Ballet Teatro Internacional Bank of America Matching Gifts Program Bank of Georgetown Barry Barker & Misty Demory Zaf Basha Bates Motel Diana Bauer Bayside Charters Christina Beharry Jamie Bennett Philip D. Berlin	Deborah Berman, in Honor of Jeffrey Herrmann & Catherine MacNeil Hollinger Dan Bernhard Lori Bettinger The Beverly Hilton Bill & Melinda Gates Foundation Employee Matching Gift Program Colin K Bills & Rachel Grossman Beryl Bills, In Memory of David B. Bills Birch & Barley/Churchkey Martha Blaxall & Joe Dickey Don & Nancy Bliss Donn Block L. Peter Boice & Mary Belknap	Eliza Booth Karen Bradley, in Honor of Howard Shalwitz Michael K. Brennan Robbie Brooks Rich & Amy Buckley Michael L. Burke & Carl Smith Busboys & Poets Susan L. & Dixon M. Butler Patricia G. Butler Cabin John Park Volunteer Fire Department William Caldwell Marianne Morse Callahan Cape Air Nantucket Airlines Capitol Counsel, LLC Wade Carey & Ted Coltnap
--	---	---	---	---

Carmine's	Divi Carina Bay Beach Resort & Casino	George Gates & Brian Albert	Charlotte Hollister & Donald Clagett	Michael Knable & Maree Webster	Mark Mason & Robin Cantor	National Endowment for the Arts	Sheldon & Barbara Repp	Molly & Paul Singer	Washington Convention & Sports Authority
David & Anne Case	Anthony & Jacqueline Dobranski	Erik Gaull & Karen Severy	Gary & Peg Honig	Brad & Kimberly Knott	Peter Mathers & Bonnie Beavers	National New Play Network	Elaine Reuben	Skadden, Arps, Slate, Meagher & Flom LLP & Affiliates	Washington Improv Theatre
Leslie Cashen	Sheryl & Rick Donaldson	Jaquelin Gellhorn	William L. Hopkins & Richard Anderson	Arlene & Robert Kogod	Winton E. Matthews, Jr.	National Public Radio	Christopher Revere & Gigi Hyland	Slumber Parties, Inc.	Washington Kastles
CENTERSTAGE	Dow Lohnes PLLC	George Sexton Associates	Barbara Horvath	Lauren S. Kogod	Brad Maupin	Jane McGrath Neal	Mary & David Rich	Corinne Smith	Washington Nationals Baseball Club
Central	Rai & Elizabeth Downs	The Gibson	Hotel Beacon	Leslie S. Kogod	David & Judith Mauriello	Neiman Marcus Group	Valerie S. J. Rind	Darrell Smith & Tom Turnbull	The Washington Post Company
Scott D. Chatham	Lis & Kevin Driscoll	Renee Gier	Hotel Monaco	Stuart A. Kogod	Mike Maxwell	Matching Gift Program	Stephen Rintoul	Ed & Andy Smith	Washington Wizards
Chernikoff Company	James and Wendy Duncan	Miles Gilburne & Nina Zolt	Washington DC	David & Hope Kosier	Joan & David Maxwell	Brian Nelson & Barbara Calvi	Julie Rios	Patricia Smith	Washington Wizards
John Chester	Joe Dunne & Elena Grigorieva	Goddard Claussen	Hotel Palomar Chicago	Kristy Simmons Art	Jennifer & Chris Mayfield	Michelle Newberry	Erika & Jeremy Rissi	Janet W. Solinger	Jody Watley
Chicago Shakespeare Theater	Ben & Louise Goddard	Public Affairs	Kathy Houle	Rachel Kronowitz & Mark Lewis	Al & Barbara McConagha	William Newlin & Louisa Foulke Newlin	Robert Wood Johnson Foundation	Linda Sorkin	Caroline Watson
Lorraine E. Chickering	Goethe-Institut	Ben & Louise Goddard	Glen & Lauren Howard	Karol Kullberg	Bruce & Maggie McElvein	Nichols Trace Natural Beef	Cindy Roberts & Andy Clark	Stan M. Spracker	Richard Weibl & Terri Nally
Lindsey Christian	Washington	Goethe-Institut	Daniel C. Hudson & Karen Garnett	Beth Ann Kyle	Bob & Mary Lou McGee	Northrop Grumman	The Rockefeller Foundation	Sprint Foundation	Nina Weissberg & Stuart Martin
Anne & Paul Christman	Linda & Michael Goldberg	Goethe-Institut	Deborah Shurtleff	Lauren & Marc Laitin	Annie McGinn	Nossaman LLP	Rockefeller & Company, Inc.	John Squire & Debra Taylor	Well Dunn Catering
Daniel Chudd	James Robert Golden	Goethe-Institut	Brad Shurtleff	Sherburne Laughlin & Brad Shingleton	Mike McIntyre	Novartis Corporation	Claudia Rosenshield	Charles St. Charles	Tommy & Barbara Wells
Sarah & Andrew Cissna	Golf Course Specialists	Goethe-Institut	Chuck & Jenny Lawson	Chuck & Jenny Lawson	Andrew McKechnie	Kirk Ogrosky	Julie Rosenthal & Mark McCaffrey	Ivania Stack	Joan S. Wessel
Doug Coblens & Michael Crabb	Brendan Goode	Goethe-Institut	Tom Leahey	Tom Leahey	Luann McKinney & Phil Costello	Omni Shoreham Hotel	Ed Rosic & Marian Block	Westport Country Playhouse	Chris Stefek
Carol Cohen & Jim Geletka	David Gossett & Dena Ringold	Goethe-Institut	LeClairRyan	LeClairRyan	Kris & Michael McMenamin	Laureen Ong & Richard Skwarek	Stu & Laura Rubens	Morgan & Marlene Whiteley	Jonathan & Jessica Stember
David S. Cohen & Craig A. Benson	The Greene-Milstein Family Foundation	Goethe-Institut	Karen Lefkowitz & Allen Neyman	Karen Lefkowitz & Allen Neyman	John M. McNally	Henry Otto & Judy Whalley	Saffron Studio	Allison Arkell Stockman	Sterling Portraits LLC
Louis & Bonnie Cohen	Steve & Sally Gresham	Goethe-Institut	Steve Leinwand & Ann Lawrence	Steve Leinwand & Ann Lawrence	Mehlman Vogel Castagnetti	Ilga Pakalns	Joel & Alexandra Scannell	Barbara L. Strack	Barbara L. Strack
David Cohn & Patricia Alper-Cohn	David Grossman & Linda Levy Grossman	Goethe-Institut	Judith E. Leonard	Judith E. Leonard	Peter & Lisa Meier	Nanette M. Paris	Janet Schneider	Katie Stratton	Thomas J. Schneider
Andy Colb & Nancy Chapman	Jeffrey H. Grotte	Goethe-Institut	Eleanor Roberts Lewis & Roger K. Lewis	Eleanor Roberts Lewis & Roger K. Lewis	Alison E. Meiss	Peck, Madigan, Jones and Stewart, Inc.	Thomas J. Schneider	Summit Point Kart	Karen & Milton Schneiderman
Nancy Chapman	The Group Tour Company	Goethe-Institut	Randall & Patricia Lewis	Randall & Patricia Lewis	Daniel Mendelson	PEPCO	Karen & Milton Schneiderman	Tarplin Downs and Young LLC	Scott & Evelyn Schreiber
Combined Federal Campaign of the National Capital Area	Carol Groves	Goethe-Institut	Erik Lichtenberg & Carol Mermey	Erik Lichtenberg & Carol Mermey	Kenneth & Barbara Mendenhall	The Pew Charitable Trust	Scott & Evelyn Schreiber	Teatro ZinZanni	Loren Sciorba & Karen Gray
Barbara & Martin Conradi	Shirley Gustafson	Goethe-Institut	John Mendonca & Jeanne Loveland	John Mendonca & Jeanne Loveland	John Mendenhall	Matching Gift Program	Loren Sciorba & Karen Gray	The St. Regis Washington, DC	Laurie Ann Phillips
Peggy Cooper Cafritz	Wendy & Don Hagen	Goethe-Institut	Todd Metrokin	Todd Metrokin	John Mendenhall	Pfizer Foundation	The Scuba Professional Diving School	Theater of War Productions	PhRMA
Cooper Thomas, LLC	Alex Hahn & Paige Lance Hahn	Goethe-Institut	Russell Mikel & Alison Hurst	Russell Mikel & Alison Hurst	John Mendonca & Jeanne Loveland	Laurie Ann Phillips	Richard Tucker Scully & Lee A. Kimball	Theatre Communications Group & MetLife	Pillsbury Winthrop Shaw Pittman Foundation
Corporate Apartment Specialists	Frona G. Hall	Goethe-Institut	Dr. Jeanne-Marie Miller	Dr. Jeanne-Marie Miller	John Mendonca & Jeanne Loveland	PhRMA	Sunny Jung Scully & William Alsup	ThinkFood Group	Pillsbury Winthrop Shaw Pittman, LLP
Joyce Cowan	Andrea & James Hamos	Goethe-Institut	Pete Miller & Sara Cormeny	Pete Miller & Sara Cormeny	John Mendonca & Jeanne Loveland	Pillsbury Winthrop Shaw Pittman, LLP	Joan H. Searby	Paul Wolfson	Thomas Mills
Nancy & Sunisa Crisman	Laura Handman & Harold Ickes	Goethe-Institut	Thomas Mills	Thomas Mills	John Mendonca & Jeanne Loveland	Tim Plant	Secret Pleasures Boutique	Joan & Ned Woodward	James Miner & Curtis Rozier
Kenneth W. Crow & Basil Halabi	Brenda Hansen & David Seide	Goethe-Institut	James Miner & Curtis Rozier	James Miner & Curtis Rozier	John Mendonca & Jeanne Loveland	Pleasure Place	Jack & Mary Nell Seed	Irene & Alan Wurtzel	Grant Mitchell & Sheila Manes
Cultural Development Corporation	Neil and Kate Hare	Goethe-Institut	James Miner & Curtis Rozier	James Miner & Curtis Rozier	John Mendonca & Jeanne Loveland	Lawrence Plotkin & Ruth Hansen	Michael Toner	James Yap	Tim Plant
Jeffrey P. Cunard	Harman Family Foundation	Goethe-Institut	James Miner & Curtis Rozier	James Miner & Curtis Rozier	John Mendonca & Jeanne Loveland	Shakespeare Theatre Company	Stephen & Narges Topetztes	Debra Yogodzinski	Grant Mitchell & Sheila Manes
Miriam J. Cutler & Paul Salditt	Florence & Peter Hart	Goethe-Institut	James Miner & Curtis Rozier	James Miner & Curtis Rozier	John Mendonca & Jeanne Loveland	Marjan & Andy Shallal	Jennifer Trock	David & Julie Zalkind	James Miner & Curtis Rozier
Richard & Karen Cys	Don Hartline	Goethe-Institut	James Miner & Curtis Rozier	James Miner & Curtis Rozier	John Mendonca & Jeanne Loveland	Howard Shalwitz	Judy & Leo Zickler	Margot & Paul Zimmerman	James Miner & Curtis Rozier
The Daily Show with Jon Stewart	Nancy Hartsock, The Hasenberg and Hartsock Group at Morgan Stanley	Goethe-Institut	James Miner & Curtis Rozier	James Miner & Curtis Rozier	John Mendonca & Jeanne Loveland	Robert Shalwitz & Paula Krasnow	Margot & Paul Zimmerman	Shannon & Kristen Zimmerman	James Miner & Curtis Rozier
Mike Daisy	Smith Barney	Goethe-Institut	James Miner & Curtis Rozier	James Miner & Curtis Rozier	John Mendonca & Jeanne Loveland	Shirley Shalwitz	Sallie C. Tyler	David Zinn & Ellen Harris	James Miner & Curtis Rozier
The Dallas Morse Coors Foundation for the Performing Arts	Christopher & Luann Drolc Fortune	Goethe-Institut	James Miner & Curtis Rozier	James Miner & Curtis Rozier	John Mendonca & Jeanne Loveland	Kevin Shaner	Tzell Travel Group	Zipcar	James Miner & Curtis Rozier
Ross Dannenberg	Mary Candace Fowler & John Peter Hazangeles	Goethe-Institut	James Miner & Curtis Rozier	James Miner & Curtis Rozier	John Mendonca & Jeanne Loveland	Victor Shargai	U.S. Chamber of Commerce	Jonathan Zucker	James Miner & Curtis Rozier
Charles Davidow	Monica Jeffries Hazangeles & John Peter Hazangeles	Goethe-Institut	James Miner & Curtis Rozier	James Miner & Curtis Rozier	John Mendonca & Jeanne Loveland	Pat Murphy Sheehy	Adrienne & David Umansky		James Miner & Curtis Rozier
Davis Wright Tremaine LLP	Aaron Heinsman	Goethe-Institut	James Miner & Curtis Rozier	James Miner & Curtis Rozier	John Mendonca & Jeanne Loveland	David & Peggy Shiffirin	Marilyn & Roderick Uveges		James Miner & Curtis Rozier
Amy Dawson	Meredith Hendrickson & Michael Kemper	Goethe-Institut	James Miner & Curtis Rozier	James Miner & Curtis Rozier	John Mendonca & Jeanne Loveland	The Shubert Foundation	Goodman Van Riper Photography		James Miner & Curtis Rozier
D.C. Commission on the Arts and Humanities	Jeffrey Herrmann & Sara Waisanen	Goethe-Institut	James Miner & Curtis Rozier	James Miner & Curtis Rozier	John Mendonca & Jeanne Loveland	Jonathan Sichel & Charles Outcalt	Jayne Victor		James Miner & Curtis Rozier
John E. Decker	Mitchell F. Hertz	Goethe-Institut	James Miner & Curtis Rozier	James Miner & Curtis Rozier	John Mendonca & Jeanne Loveland	Mary Sies & Chris Stark	Louie Vitiello		James Miner & Curtis Rozier
Stephen Deets	Dr. Alison Burgess Hickman	Goethe-Institut	James Miner & Curtis Rozier	James Miner & Curtis Rozier	John Mendonca & Jeanne Loveland	Larry Rappy	Wainger Group		James Miner & Curtis Rozier
Elizabeth Delaney	Dan Hicks & John McCall	Goethe-Institut	James Miner & Curtis Rozier	James Miner & Curtis Rozier	John Mendonca & Jeanne Loveland	Rasika	Theodore H. Walker		James Miner & Curtis Rozier
Irene & Robert Denhardt	Hines Interests Limited Partnership	Goethe-Institut	James Miner & Curtis Rozier	James Miner & Curtis Rozier	John Mendonca & Jeanne Loveland	Deborah A. Rayworth	Karl T. Walli		James Miner & Curtis Rozier
Steven desJardins	Linda & Steve Hirsch	Goethe-Institut	James Miner & Curtis Rozier	James Miner & Curtis Rozier	John Mendonca & Jeanne Loveland	Renay & Bill Regardie	The Walters Art Museum		James Miner & Curtis Rozier
Discovery Communications, Inc.	HIIT Contracting, Inc.	Goethe-Institut	James Miner & Curtis Rozier	James Miner & Curtis Rozier	John Mendonca & Jeanne Loveland	Peter Reichertz			James Miner & Curtis Rozier
Neal & Hollis Dittersdorf		Goethe-Institut	James Miner & Curtis Rozier	James Miner & Curtis Rozier	John Mendonca & Jeanne Loveland				James Miner & Curtis Rozier

Woolly Mammoth's annual fund provides the essential bedrock of support for all our programs and community services. Your generous—and tax-deductible—gift helps us continue producing the most original new plays in America.

