

# DEAD Inside



JULY 9–AUG 3

WOOLLY  
HAMMATH

# CONTENTS

<b>PAGE 3-4</b>	<b>A NOTE FROM MARIA</b>
<b>PAGE 5</b>	<b>PRODUCTION INFO &amp; CREDITS</b>
<b>PAGE 6</b>	<b>WOOLLY MAMMOTH 25-26 SEASON</b>
<b>PAGE 8-10</b>	<b>CAST + CREATIVE TEAM BIOS</b>
<b>PAGE 11-12</b>	<b>ABOUT WOOLLY MAMMOTH</b>
<b>PAGE 13-15</b>	<b>LEADERSHIP LAND ACKNOWLEDGMENT</b>
<b>PAGE 16-17</b>	<b>STAFF</b>
<b>PAGE 18-19</b>	<b>BOARD OF DIRECTORS COMPANY OF ARTISTS</b>
<b>PAGE 20-22</b>	<b>CONTRIBUTORS + FUNDERS</b>
<b>PAGE 23</b>	<b>CONNECTIVITY AMBASSADORS</b>
<b>PAGE 24-26</b>	<b>WHY GIVE? MAMMOTH FOREVER &amp; DONORS</b>



This performance includes explicit language and discussion of infertility, miscarriage, abortion, and sexual acts.



Filming, recording, or taking photographs of this performance by any means whatsoever is strictly prohibited. Please silence your cell phones and any other noisemaking devices.

# A NOTE FROM MARIA

Happy summer to you!

Welcome to *Dead Inside*!

For those of you who may be wary of this title, know that you are in excellent hands with Riki Lindhome. She is a stellar artist, and I am so happy to welcome her to Woolly Mammoth.



Woolly has a long history presenting and producing comedy, from Uprights Citizens Brigade to The Second City to the Tony Award-winning *Just for Us* created and performed by Alex Edelman. I am incredibly excited to offer an opportunity for Riki to develop a show like *Dead Inside*, which firmly sits in the crossover between comedy and (musical) theatre. The show is so funny, unexpected, and also profound, speaking to an experience that many people share surrounding fertility but rarely talk about publicly. We extended the preview period for this show specifically so that Riki and her collaborators could have the time to hone material in front of our Woolly audiences – THANK YOU for being a part of the development process for this production!



While this may be my last official production at Woolly, I leave you with a stacked and superb Artistic Team in Kristen Jackson (Associate Artistic Director & Director of Connectivity), Mina Morita (Bold Resident Director and Creative Producer), Sonia Fernandez (Director of New Work), and Ben Levine (Director of Production). As the national search for the next Artistic Director takes place, they will be in the trenches producing next season and keeping Woolly as artistically ambitious as ever.

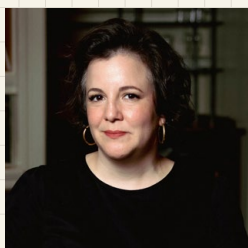


Photo credits: The Second City • *Dance Like There's Nobody Watching*, 2024. Photo by Teresa Castracane; *Just for Us*, 2022. Photo by Teresa Castracane; *Dead Inside*, 2025. Photo courtesy of Riki Lindhome.

I also need to give an enormous shoutout to Managing Director Kimberly Douglas, who has been a magnificent partner to me at Woolly. She values collaboration and innovation deeply. It has been a total honor and joy to work with her, as well as alongside Woolly's committed Board of Trustees. They all hold Woolly "in trust" for our community through this next chapter.

Thank YOU for being part of our herd. We often say at staff goodbyes: "Once a mammoth, always a mammoth!" I know I will stay true to those words.

With much love, respect, and excitement for Woolly's future, chapter,



*Maria Manuela Goyanes*

**Maria Manuela Goyanes**

ARTISTIC DIRECTOR

WOOLLY MAMMOTH THEATRE COMPANY



L-R: Mina Morita, Kristen Jackson, Ben Levine, Sonia Fernandez. Photo by Josh Feldman



**WOOLLY MAMMOTH THEATRE COMPANY**

**MARIA MANUELA GOYANES**

ARTISTIC DIRECTOR

**KIMBERLY E. DOUGLAS**

MANAGING DIRECTOR

**ALI WONG AND BILL HADER**

**PRESENT**

**DEAD**  
**Inside**

**CREATED AND PERFORMED BY**

**RIKI LINDHOME**

**DIRECTED BY**

**BRIAN MCELHANEY**

ASSOCIATE DIRECTOR

**ELIZABETH DINKOVA**

SOUND DESIGNER

**SARAH O'HALLORAN<sup>+</sup>**

SCENIC DESIGNER

**MEGHAN RAHAM<sup>+</sup>**

CHOREOGRAPHER

**KAT BURNS**

LIGHTING + VIDEO DESIGNER

**LUIS GARCIA**



[+] Recognizes representation by  
United Scenic Artists, Local USA-  
829 of the IATSE. [\*] Recognizes  
representation by Make-up Artists &  
Hair Stylists, Local 798 of the IATSE.

## CREW & PRODUCTION TEAM

ASSISTANT PRODUCTION MANAGER.....Madison Bahr  
 STAGE MANAGER.....Fe Miranda  
 ASSOCIATE LIGHTING AND VIDEO DESIGNER.....Clara Ashe-Moore  
 ASSISTANT STAGE MANAGER.....Brian Martinez  
 REHEARSAL ASSISTANT STAGE MANAGER.....Samba Pathak  
 LIGHTING SUPERVISORS.....Molly Brennan,  
**Clarissa Briasco-Stewart, Jason Zuckerman**  
 A/V SUPERVISOR.....Ian Vespermann  
 LIGHTING PROGRAMMER.....Manny Garcia  
 AUDIO TECHNICIAN.....Isabel Restrepo  
 PRODUCTION ASSISTANT.....Naama Brown  
 LIGHT BOARD OPERATOR.....Henry Cohen, Lucy Strandquist  
 STAFF CARPENTERS.....Mickey Cappiello, Lily Anglin  
 CARPENTERS.....Mahdi Shakur, Nicholas Montgomery,  
**Shiloh Coleman, Hakeem Ford**

WOOLLY  
MAMMOTH

[ 25-26  
SEASON ]

LEARN  
MORE

ALI WONG AND BILL HADER  
present

# DEAD Inside

created & performed by RIKI LINDHOME  
directed by BRIAN MCELHANEY

WOOLLY MAMMOTH JULY 9-27

WOOLLY MAMMOTH THEATRE CO. •  
BOSTON'S COMPANY ONE THEATRE  
present

# THE GREAT PRIVATION

(How to flip ten cents into a dollar)

by NIA AKILAH ROBINSON  
directed by MINA MORITA

WOOLLY MAMMOTH COMPANY ONE SEP 11-OCT 12

ho ho ho  
ha ha ha ha

created & performed by JULIA MASLI  
directed by KIM NOBLE

WOOLLY MAMMOTH NOV 12-DEC 21

# THE WORLD TO COME

by ALI VITERBI  
directed by HOWARD SHALWITZ

WOOLLY MAMMOTH THEATER J FEB 3-MAR 1

# SASHA VELOUR'S TRAVESTY

WOOLLY MAMMOTH MAR 24-APR 12

# A Fine MADNESS

created & performed by JUSTIN WEAKS  
directed by RAYMOND O. CALDWELL

WOOLLY MAMMOTH JUNE 2-21

## CAST BIO



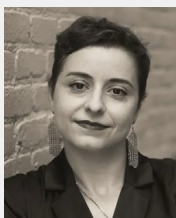
**RIKI LINDHOME** is an actress, comedian, writer, and musician, best known as one half of the musical comedy duo Garfunkel and Oates. Her television and film credits include roles in *The Big Bang Theory*, *Another Period*, *Knives Out*, and *Wednesday* on Netflix. Riki is excited to share this journey with audiences and grateful to the many, many people who helped her make this show what it is today. Especially the guy listed below.

**Artist Talkbacks following the July 17th and July 24th performances.**

## CREATIVE TEAM BIOS



**BRIAN MCELHANEY** (Director) is an Emmy-Nominated comedian, most known for his work as an actor/writer/director in the sketch duo "BriTANicK" in which he performs all over the world. He has written for "SNL," "It's Always Sunny In Philadelphia," and so many cancelled pilots. Recently he co-wrote and directed his first feature starring Gaten Matarazzo from "Stranger Things". He also co-wrote the upcoming feature "Over Your Dead Body", directed by Jorma Taccone of *The Lonely Island* and starring Jason Segal. He was the voice of Cartoon Network for 6 years, and probably screamed at your children to watch more television.



**ELIZABETH DINKOVA** (Associate Director) is a Bulgarian director, adaptor, and collaborative creator who explores alternative realities at the intersection of theater, film, and music in pursuit of communal transformation. She is currently the Artistic Director of Spooky Action Theater. In 2021-22, she was an Associate Artistic Director of 7 Stages Theatre, Atlanta's hub for boundary-pushing international theater. She is an alum of the Alliance Theatre's Artistic Leadership fellowship, the Studio Theatre's Artistic Apprenticeship, and a recent graduate from the MFA Directing program at the Yale School of Drama, where she served as a Co-Artistic Director of the Yale Summer Cabaret and received the Julian Milton Kaufman prize for Directing. Recent directing projects include



Heartbeat Opera's *Salome* (NYT Critics' Pick), Spooky Action's *Professor Woland's Black Magic Rock Show* and *Frontières Sans Frontières*, *The Berlin Diaries* at Theater J, *Hamlet* and *Coriolanus* at Shakespeare in the Woods, *Rage*, a play with music inspired by Stephen King's eponymous novel, the visual album *TIT*, inspired by *Titus Andronicus*, at the NYC Indie Theatre Film Festival. Elizabeth has taught acting, directing, devising, and musical theater at the Toronto Metropolitan University, University of California Riverside, Quinnipiac University, and Queens College CUNY.



**LUIS GARCIA** (Lighting + Video Designer) is a Peruvian-American, Helen Hayes nominated, lighting and media designer based in College Park, MD, working across theatre, dance, installations, and live performance art. He holds a BA in Theatre Arts from Stetson University (2016) and an MFA from the University of Maryland, College Park (2024).

Recognized in 2018 as one of Live Designs "30 Under 30", Luis aims to inspire younger BIPOC artists by advocating for authenticity and diversity in the arts. Luis currently serves as Co-IDEAS Coordinator for the USITT Lighting Design and Technology Commission and is a member of the SETC Design Committee. He is also an alumnus of the 2017 OSF F.A.I.R. Program and the 2016 USITT Gateway Cohert.



**SARAH O'HALLORAN** (Choreographer) is a composer and sound designer with a Ph.D. in music from the University of Virginia. She originally comes from Ireland and now lives in the DMV area. Her theater credits include: Fords Theatre: *Mr Lincoln*; Folger Theater: *A Room in the Castle*; Theater J: *The Berlin Diaries*, *Prayer for the French Republic*,

*The Hatmaker's Wife*, *This Much I Know*, *The Chameleon*, *Gloria: A Life*, *Compulsion*, *Nathan the Wise*, and *Talley's Folly*; Olney Theater Center: *The Brothers Paranormal*, *Our Town*, and *Labour of Love*; Woolly Mammoth: *She the People: The Resistance Continues*; 1st Stage: *The Phlebotomist*, *The Brothers Size*, *Swimming with Whales*, *When the Rain Stops Falling*; Studio Theatre: *Cry it Out*; Everyman Theatre: *Queens Girl: Black in the Green Mountains*; *Sense and Sensibility*, *Be Here Now*, *Proof*, *Dinner with Friends*; Mosaic: *In His Hands* and *The Return*.



**KATHRYN "KAT" BURNS** (Choreographer): 2x Emmy Award-winning choreographer for "Crazy Ex-Girlfriend". TV: 200 plus episodes including "Dancing With The Stars", "Key & Peele", "The Other Two", "The Morning Show", "Drunk History", "Reno 911!", "Wet Hot American Summer", "Garfunkel & Oates" etc. Theater: Crazy Ex-Girlfriend Live

(Radio City Music Hall/LA Orpheum/Tour), Rachel Bloom's Death Let Me Do My Show (Lortel/Netflix), A Wicked Soul in Cherry Hill(Geffen Playhouse), Found the Musical (IAMMA), Upright Citizens Brigade & The Groundlings. Other career highlights: Borat Subsequent Moviefilm (Oscar nominated), Pharrell Williams' "Happy" music video (GRAMMY winning), acted/choreographed opposite Dolly Parton in Mountain Magic Christmas. @katmburns



**MEGHAN RAHAM** (Set Designer) is primarily a set designer with a strong interest in the development of new work. She was a Resident Artist at Round House Theatre 2023-2025 (*Bad Books*, *Topdog/ Underdog*, *A Jumping Off Point*, *Radio Golf*, *Master Harold...and the Boys*, *Cat on a Hot Tin Roof*, *The Night Alive*, *Fool for Love*), and has designed sets and/ or costumes

for Ford's (*My Lord, What a Night*; *Who's Afraid of Virginia Woolf?*), Arena Stage (*JQA*), Signature (*Daphne's Dive*, *Easy Women Smoking Loose Cigarettes*), Folger (*District Merchants*, *Romeo and Juliet*, *The Conference of the Birds*), Woolly Mammoth (*She the People, She the People: The Resistance Continues*, *Pike St.*), Studio (*The Aliens*, *Red Speedo*), Theatre J (*Life Sucks*), and the Smithsonian American Art Museum in DC, and beyond at Everyman (*The Chinese Lady*), Lincoln Center's LCT3 (*CLAY*), Steppenwolf (*You Got Older*), Lookingglass (*CLAY*, *Faedia: Queen of Haiti*), The Building Stage (*The Ring Cycle*, *The Master Builder*, *NOIR*, *Moby-Dick*), Victory Gardens (*A Big Blue Nail*), The Hypocrites at the Museum of Contemporary Art Chicago (*Frankenstein*), Center Theatre Group in LA (*Venice*), Barrington Stage (*The Chosen*), and Kansas City Repertory Theatres (*CLAY*, *The Circle Mirror Transformation*, *Broke-Ology*, *Little Shop of Horrors*, *Venice*, *Death of a Salesman*), and internationally in Prague, Czech Republic (*S/he is Nancy Joe*). She is the recipient of a Princess Grace Theatre Honoraria and a Maryland State Arts Council Independent Artists Award. She also enjoys experimenting with sound and video and was the photographer and videographer for the Kim Gordon x model home single *RAZZAMATAZZ* (Matador Records, 2024). Meghan is a professor at American University.

# ABOUT WOOLLY MAMMOTH

The Tony Award®-winning Woolly Mammoth creates badass theatre that highlights the stunning, challenging, and tremendous complexity of our world. Woolly is proud to be considered “a national champion of the new—and frequently provocative—American play” (*Washington Post*).

For over 40 years, Woolly has maintained a high standard of artistic rigor while simultaneously daring to take risks, innovate, and push beyond perceived boundaries. Woolly Mammoth was co-founded in 1980 by Roger M. Brady, Linda Reinisch, and Howard Shalwitz and is now co-led by Artistic Director Maria Manuela Goyanes and Managing Director Kimberly E. Douglas. Located in Washington, DC, equidistant from the Capitol Building and the White House, this unique location influences Woolly’s investment in actively working our mission: To produce courageous and invigorating new work to radically redefine theatre as a catalyst for an equitable, creative, and engaged society.

One of the few remaining theatres in the country to maintain a company of artists, Woolly serves as an essential research and development role within the American theatre.

**PLAYS PREMIERED HERE HAVE GONE ON TO PRODUCTIONS AT HUNDREDS OF THEATRES ALL OVER THE WORLD AND HAVE HAD LASTING IMPACTS ON THE FIELD.**

*A Strange Loop* was produced at Woolly in 2021, ran on Broadway from April 2022 through January 2023, and won the Tony Award® for Best Musical in 2022. Other notable highlights include the world premiere productions of Danai Gurira’s *Eclipsed* in 2009 that later went on to be the first Broadway play with a cast & creative team of all Black women; Bruce Norris’ Pulitzer Prize-winner *Clybourne Park* in 2010; and Anne Washburn’s *Mr. Burns: a post-electric play* in 2012. Woolly produces theatre beyond our building by sending productions like Aaron Posner’s *Stupid F\*cking Bird* across the nation, bringing Aleshea Harris’ *What to Send Up When It Goes Down*

to neighborhoods throughout DC, and launching a national tour of Madeline Sayet's *Where We Belong*.

Woolly has built a reputation for innovation off the stage as well. Woolly values building relationships with its local community and resident artists in the DMV area. Our nationally-acclaimed Connectivity Department is one of the ways we accomplish this by linking Woolly to like-minded community organizations in order to generate mutually beneficial, impact and power-aware partnerships.

## **WE'VE EARNED OUR REPUTATION BY HOLDING FAST TO OUR CORE VALUES.**

We are an anti-racist and radically inclusive community—across race, ethnicity, nationality, age, gender identity, sexual orientation, physical ability, socioeconomic background, and political viewpoint—in which all are encouraged to exchange ideas freely and reach for new understanding. We are a supportive home for creative risk-taking by our company and guest artists, staff, board, volunteers, audiences, donors, and colleagues. Through relentless inquiry and experimentation, we strive for world-class excellence and innovation in every aspect of our work.

## **OUR AUDIENCE COMPLETES OUR MISSION.**

Woolly attracts one of the youngest and most diverse theatre audiences in DC, and we're committed to making our work widely accessible. Woolly was the first to pioneer Pay-What-You-Will tickets in the DMV, which are now available at every single performance.

**THANK YOU TO ALL OF OUR DONORS, SUBSCRIBERS, AND AUDIENCE MEMBERS. WITH YOUR SUPPORT, WE WILL CONTINUE TO FIND AND PRODUCE THE MOST INNOVATIVE NEW PLAYS IN AMERICA.**



## WOOLLY MAMMOTH LEADERSHIP



### MARIA MANUELA GOYANES

[she/her] is the **Artistic Director** of Woolly Mammoth Theatre Company. Prior to joining Woolly, she served as the Director of Producing and Artistic Planning at The Public Theater, where she oversaw the day-to-day execution of a full slate of plays and musicals at the Public's five-theatre venue at Astor Place and the Delacorte Theater for Shakespeare in the Park.

Earlier in her career at The Public, she managed some of the theatre's most celebrated productions, including *Hamilton* by Lin-Manuel Miranda, *Josephine and I* by Cush Jumbo, *Straight White Men* by Young Jean Lee, *Barbecue* by Robert O'Hara, and *Here Lies Love* by David Byrne and Fatboy Slim.



Pictured in *A Strange Loop*: Jason Veasy, John-Michael Lyles, Jaquell Spivey, John-Andrew Morrison, James Jackson, Jr., Antwayn Hopper.

While at The Public, Maria also held a position on the adjunct faculty of Juilliard and curated the junior year curriculum of the Playwrights Horizons Theater School at NYU. She has guest lectured at Bard College, Barnard College, Brown University, Columbia University, Juilliard, the National Theater Institute at The Eugene O'Neill Theater Center, UCSD, the University of Texas-Austin, and Yale University, among others.

Since 2015, Maria has also served as a member of the board of the National Alliance for Musical Theatre. From 2006 to 2008, she co-chaired the Soho Rep Writer/Director Lab with Jason Grote, and from 2004 to 2012, Maria was the Executive Producer of 13P, one of her proudest achievements. Maria is a first-generation Latinx-American, born to parents who emigrated from the Dominican Republic and Spain. She was raised in Jamaica, Queens, and has a collection of hoop earrings to prove it. She earned her Bachelor of Arts in 2001 from Brown University.



**KIMBERLY E. DOUGLAS** (she/her)

is the **Managing Director** of Woolly Mammoth Theatre Company. She has 20+ years of experience in event production management, program development, strategic partnerships, arts education, and the performing arts.

Graduating from Duke Ellington School of the Arts, Kimberly then continued her studies at Howard University College of Fine Arts graduating with a B.A. in Music Business and a minor in Jazz Voice.

Kimberly served as the Managing Artistic Director for THEARC Theater, a program of Building Bridges Across the River. For 15 years she led the theater operations for a 365-seat theater and a Black Box, led the development and fundraising for theater initiatives such as facilities and buildings enhancements and upgrades, curated seasonal programming on THEARC Theater stage and Black Box,

and expanded relationships and funding for the iCAN Technical Theater internship. Through her leadership, THEARC Theater is widely recognized as a cultural staple for artists, arts organizations, and community East of the River. Kimberly served as a board member for Woolly Mammoth Theatre Company from April 2021–March 2023 after establishing a long-standing partnership as Woolly Mammoth’s Core Connectivity partner.

Kimberly launched her company KD ARTS Consulting in March 2022, providing program curation and production services, talent and operations management, and arts administration. Through KD ARTS Consulting, she worked with organizations like Demaskus Theatre Collective in residency at the August Wilson African American Cultural Center and The Musicianship’s 2023 Wammie Awards. Currently, Kimberly is co-chair of the D.C. Co-lab Equity and Justice Committee advocating for arts education. She was born and raised in D.C. and presently resides in Upper Marlboro, MD.

## **LAND ACKNOWLEDGEMENT**

Woolly Mammoth acknowledges that our theatre stands upon occupied, unceded territory: the ancestral homeland of the Nacotchtank whose descendants belong to the Piscataway peoples. Furthermore, the foundation of this city, and most of the original buildings in Washington, DC, were funded by the sale of enslaved people of African descent and built by their hands.

*Language developed in consultation  
with Dr. Gabrielle Tayac*

# WOOLLY MAMMOTH STAFF

## LEADERSHIP

ARTISTIC DIRECTOR.....Maria Manuela Goyanes  
 MANAGING DIRECTOR.....Kimberly E. Douglas  
 ARTISTIC DIRECTOR EMERITUS.....Howard Shalwitz

## ADMINISTRATION

GENERAL MANAGER.....J.P. McLaurin  
 RENTALS AND OPERATIONS MANAGER.....Kristen Temple  
 CONCESSIONAIRES.....Alfonso Morales Escobar, Zoie Collins,  
 William Maedel III, Andrea Bellamore, Rakell Foye, Kara Harrison,  
 Wallace Ash Hewchuck  
 HOUSE MANAGERS.....Myra Cruz, Rakell Foye, Kara Harrison,  
 Michael Jenkinson, Bob Reeg, Melissa Sturges Shannon Wilson

## ARTISTIC

BOLD RESIDENT DIRECTOR & CREATIVE PRODUCER.....Mina Morita  
 RESIDENT INTIMACY CONSULTANT.....Chelsea Pace

## CONNECTIVITY

ASSOC. ARTISTIC DIR./CONNECTIVITY DIRECTOR.....Kristen Jackson  
 ASSOC. DIR. OF CONNECTIVITY.....Emily Lathrop  
 CONNECTIVITY ASSISTANT.....Natalia Corvoisier

## DEVELOPMENT

DIRECTOR OF DEVELOPMENT.....Kelsey Magill  
 GRANTS MANAGER.....Olivia Yamamoto  
 DEVELOPMENT OPERATIONS AND DATABASE MANAGER.....Joshua Scheer

## FINANCE

STAFF ACCOUNTANT.....Emily Falkenstein



## MARKETING & AUDIENCE SERVICES

DIRECTOR OF MARKETING.....Josh Feldman  
 CREATIVE CONTENT DESIGNER.....Piama Habibullah  
 LIN-MANUEL MIRANDA FAMILY MARKETING FELLOW.....Gisela Estrada  
 LEAD SALES ASSOCIATES.....Terrence Griffin and Sydne Lyons  
 PUBLIC RELATIONS CONSULTANT.....Maurissa Potts, **Spotted MP PR**  
 BOX OFFICE SUPERVISORS.....Michael Meyerson, Hannah Donoghue, Kara Harrison, Will Lorenz, William Maedel III, Zoie Collins, Arwyn Oshry  
 BOX OFFICE ASSOCIATES.....Chelsea Foster, Hannah Donoghue, Kara Harrison, William Maedel III, Zoie Collins  
 BRAND CONSULTANT.....Maritza Lizama, Pamela Nieto, **Captiva Branding**  
 DIGITAL AD AGENCY.....Capacity Interactive

## NEW WORK

DIRECTOR OF NEW WORK.....Sonia Fernandez  
 LIN-MANUEL MIRANDA FAMILY NEW WORK & ARTISTIC PRODUCING FELLOW ...  
 .....Aysha Zackria

## PRODUCTION

DIRECTOR OF PRODUCTION.....Ben Levine  
 TECHNICAL DIRECTOR.....Teddy Mueller  
 PRODUCTION COORDINATOR.....Ynika Pocopio Yuag  
 LIN-MANUEL MIRANDA FAMILY PRODUCTION FELLOW.....Fe Miranda

HR services provided by NonProfitHR

IT services provided by RenTec Solutions

Financial consultation provided by SC&H

# BOARD OF DIRECTORS

## EXECUTIVE COMMITTEE

**Kaiti Saunders**  
*President*

**Julie Rios**  
*President Elect*

**J. Chris Babb**  
*Immediate Past President*

**Nancy Hartsock**  
*1st Vice President*

**David Sharman**  
*Vice President*

**Lushaé Cook**  
*Co-Treasurer*

**Barbara Strack**  
*Secretary*

**Michael Fitzpatrick**  
*Ex Officio*

**Scott Schreiber**  
*Ex Officio*

Woolly Mammoth Theatre Company is proud to be supported  
by an active and engaged 26-member Board of Directors.

## BOARD MEMBERS

Colin K. Bills

David S. Cohen

Abby Fenton

Jane Grove Fishkin

Sari Hornstein

Vinca LaFleur

Gerardo Luna

Malcolm McCluskey

Pete Miller

Sara Mindel

Liz Norton

Michael E. Ramirez

Eric Ruffin

Sheldon Scott

Peggy Sparks

Ivania Stack

Cameron Tommey

# COMPANY OF ARTISTS

Colin K. Bills

Shana Cooper

Shannon Dorsey

Jessica Frances Dukes

Gabriela Fernandez-Coffey

Nataki Garrett

Tim Getman

Kimberly Gilbert

Naomi Jacobson

Misha Kachman

Sarah Marshall

Jennifer Mendenhall

Jared Mezzocchi

Cody Nickell

Kate Eastwood Norris

Jon Hudson Odom

Robert O'Hara

Tosin Olufolabi

Erika Rose

Michael Russotto

Ivania Stack

Emily Townley

Yury Urnov

Justin Weak

# CONTRIBUTORS AND FUNDERS

Woolly Mammoth Theatre Company remains more dedicated than ever to the evolution of the American theatre, and we could not produce groundbreaking new plays and world class artistry without our fearless family of donors. We would like to thank the following contributors who made gifts of \$300 or more between March 2024 and March 2025. Thank you!

## CORPORATE, FOUNDATION, AND GOVERNMENT SPONSORS

Bold Theater Women's  
Leadership Circle

Horace W. Goldsmith  
Foundation

The Andrew W.  
Mellon Foundation

Broadway Cares /  
Equity Fights AIDS

Lorenzo's Ink

The Dallas Morse  
Coors Foundation for  
the Performing Arts

Capital Pride Alliance

Monumental Sports  
and Entertainment

DC Commission On The  
Arts & Humanities

National Endowment  
for the Arts

The Morris and  
Gwendolyn Cafritz  
Foundation

Diane & Norman  
Bernstein Foundation

New Georges

The Shubert  
Foundation

Downtown DC  
Business Improvement  
District

Nora Roberts  
Foundation

The Terrence McNally  
Foundation

FEMA

Pepco, an Exelon  
Company Share Fund

The Venable  
Foundation

Flamboyant Foundation

Sherman Fairchild  
Foundation

Hispanic Federation

TD Charitable  
Foundation

## **RADICALS: \$10,000+**

Anonymous (2)	Nancy Hartsock, The Hasenberg Hartsock Group at Merrill Lynch Wealth Management	Douglas Nevin
Sunny & Bill Alsup		Liz Norton
Donna Ari	Chas Hausheer	Virginia Prange
Mark & Cindy Aron	Sari Hornstein	Julie Rios
J. Chris Babb & James Martin	Beth & Mike Kasser	Kaiti Saunders & Rob Colenso
Janice Bashford	Rosemary King	Evelyn & Scott Schreiber
Susan & Dixon Butler	Arlene & Robert Kogod	David Sharman
Wade Carey & Ted Coltman	Vinca & David LaFleur	Edward Starr & Marilyn Marcossion
David S. Cohen	Gerardo Luna	Barbara L. Strack
Louis & Bonnie Cohen	Cathy MacNeil- Hollinger & Mark Hollinger	Amy Weinberg & Norbert Hornstein
Jeffrey P. Cunard	Joan & David Maxwell	Judy & Leo Zickler
Jane & Nathan Fishkin	Pete Miller & Sara Cormeny	
Michael Fitzpatrick & Miriam Gonzales		

## **REVOLUTIONARIES: \$1,500-\$9,999**

Anonymous (2)	Marietta Ethier	Laura Hart
Jim Asp & Perry Streidel	John Evans	John & Margaret Hauge
Colin K. Bills	Rob Finn & Dan Shaver	Carla & Jamie Hine
Thomas L. Bowen	S&ra Fitzpatrick	Linette S. Hwu
Community Systems, Inc.	Avani Gala	Hugh & Caroline Kaplan
Mary Pat Davis & Wesley Callendar	Jinny & Mike Goldstein	Kay Kendall & Jack Davies
Lear Debessonet	Greene-Milstein Family Foundation	Barry Kropf
Rickie Eatherly	H Rubenstein Family Charitable Foundation	Marcel C. La Follette & Jeffrey K. Stine



## REVOLUTIONARIES: \$1,500-\$9,999 (CON'T)

Jenny & Chuck Lawson	Jill & Rick Robinson	Janet Stone
Sherry Marts & Lawrence Haller	Lucinda Romberg	Ralph & Bobbi Terkowitz
Heather McDonald	Sabrina Rose-Smith	Cameron Tommey
Marianne M. Mills & Steven A. Mills	Irene Roth & Vicken Poochikian	Vanguard Charitable Endowment Program
Sara Mindel & Jennifer Segovia	Howard Shalwitz & Jeanette Reitz	Bruce & Debby Vivari
Lushaé Cook & Christopher Montgomery, in honor of Rachel Montgomery	Share Fund	Gloria Weissberg
Morgan Stanley	Craig Pascal, in memory of Victor Shargai	Joan S. Wessel
Kristine Morris	Pat Murphy Sheehy Playwrights Fund	Gregory A. Williams
Sue Henry & Carter Phillips	Jayne Sherman	Barbara & Paul Wolf & E & B Family Trust
Judy Pomeranz	Peggy & David Shiffrin	The Zients Family Foundation
Barbara & Shelly Repp	Leslie Sloane	
	Linda W. Sorkin	

## RISK-TAKERS: \$300-\$1,499

Anonymous (3)	John Chester	Abby Paige Fenton
Mary Abbajay & Christopher Marlow	Eli & Virginia Grace Cohen	Tracy Fisher
Emika Abe	John Crenshaw	Alison Flynn
Eleanor Acheson	Daryl & Steven Roth Foundation	Mary C&ace Fowler & Robert Brookhiser
Paola Allais Acree & Alex&er Acree	Peter Evans	Jonathan Fraser & Julia Walther
Mary Barnes	Jody Falco & Jeffrey Steinman	Elizabeth & Paul L. Friedman, in memory of Michael Friedman
Nan Beckley	Robert Falk	Barry & Mary Ann Fulton
Michael L. Burke & Carl Smith	The Manny & Ruthy Cohen Foundation	

## RISK-TAKERS: \$300-\$1,499 (CONT.)

Donald Gatlin	Lauren S. Kogod & David Smiley	Setsuko Rosen
Nancy Gibbs	Leslie S. Kogod	Steven M. Rosenberg & Stewart C. Low
Marguerite Godbold & Steven Bershader	Paul & Jill Levine	Richard Tucker Scully & Lee A. Kimball
John Goodman	Thomson Ling	Dan Shaheen
Bridget Grier	Samuel Lopez	Peggy Sparks
Jeffrey H. Grotte	Susan & Daniel Mareck	Scott Suchyta
Sushma Gupta	Robin Cantor & Mark Mason	Erin Talkington
Anne Hall	Anna Therese McGowan	Karen Thomas
Florence & Peter Hart, in honor of Howard Shalwitz	Jeffrey Menick	Marc Thompson
Taylor Hartley	Victor & Wilhelmine Miller	Joseph Toscano
Kirby Heller	Martha Newman	Daniel Vine
Melane K. Hoffmann	Jean E. Osburn	Nola Werlinich
Janice John	Henry Otto & Judy Whalley	Gerry Widdicombe
Christopher & Christina Junker	Margaret Pastor	Kristin Williams & Howard Weissman
Richard Kahn	Norval Stanley Peabody	Beverly & Christopher With
Howard & Christine Kaufman	Nancy & Vincent S. Radosta	
Eugene & Dale Kenney	Sam Roberson & Ted Buckley	
Tori J. Key		

## IN-KIND

American Combustion Industries	Kimberly Douglas
Google	Ralph & Bobbi Terkowitz

## CONNECTIVITY AMBASSADORS

The Ambassadors are a network of volunteers who help advocate for Woolly Mammoth, deepen our ties to a range of DC communities, and support resourcing the work of the theatre. They work closely with the Connectivity, Marketing, and Development Departments to offer insights on the plays from an audience perspective, mobilize their circles, organize events, coordinate groups, support special events, and more.

Rachael Albert

Eva Barrie

Alana Beasley

Robbie Champion

Jazzmin Crawley

Pete Danelski

Maunica Devi

Ankur Garg

Bridget Grier

Justyn Hintze

Ngozia Hunter

Kim Leonard

Toby Makowski

Bryanda Minix

Tali Natter

Daniel Pattenden

Rachel Sauer

Brad Teague

Uchenna Ukonu

Frankie V

Kathleen White

If you are interested in becoming an ambassador, please contact Associate Director of Connectivity Emily Lathrop at [emily.lathrop@woollymammoth.net](mailto:emily.lathrop@woollymammoth.net) \_\_\_\_\_



*Rose: You Are What You Eat* Copy photo by Teresa Castracane



# WHY GIVE?

Unlike the woolly mammoth, which went extinct more than 10,000 years ago, Woolly Mammoth Theatre Company isn't going anywhere anytime soon. The reason? People like you! Over our 40+ year history, contributions from patrons continue to provide the bedrock of support that makes everything we do possible.

## YOUR GIFT TO WOOLLY MAMMOTH ALLOWS US TO:

**Produce innovative theatrical productions** you cannot see anywhere else.

**Offer ticket accessibility programs** such as Pay-What-You-Will seats for every performance, ensuring our work remains accessible to all.

**Pilot radical care programs** like our Company Pool Fund, which offers grants to our Company members to invest in their personal and professional growth.

**Provide transformational career development opportunities** through the Miranda Family Fellowship program to train and compensate the next generation of theatre makers.

**Establish innovative collaborative partnerships** with local organizations like SPIT DAT, DC's longest running open mic, THEARC Theater, and Howard University.

**And so, so much more!**

## SUPPORT WOOLLY TODAY!

To learn more about making a gift to Woolly Mammoth or to take advantage of our NEW benefits, please contact our Development Department by calling **202-312-5276** or email us at **[development@woollymammoth.net](mailto:development@woollymammoth.net)**.

Thank you for making our work possible!







## BECOME A MAMMOTH FOREVER:

Arranging a planned gift to Woolly Mammoth today is a special way to ensure your legacy and have a long-term impact on the theatre even after your lifetime. We are here to provide resources and ensure that making a planned gift to Woolly Mammoth is as seamless as possible.

### WOOLLY MAMMOTH CAN ACCEPT PLANNED GIFTS IN THE FORM OF:

#### **Bequests:**

A bequest is made by adding a codicil to an existing will or preparing a new will.

#### **Retirement Plan:**

Make Woolly a beneficiary of a retirement plan such as a 401(k); IRA; 403(b).

#### **Life Insurance Name:**

Woolly Mammoth as a beneficiary to receive proceeds at the end of a lifetime.

#### **Charitable Trust Gifts:**

A charitable trust is an irrevocable trust established for charitable purposes.

## LET US KNOW YOUR PLANS—AND DEEPEN YOUR EXPERIENCE WITH WOOLLY.

For a confidential conversation or to share your intentions, please contact Woolly's Development Department at **202-312-5276** or email **[development@woollymammoth.net](mailto:development@woollymammoth.net)**.

*"In my view, theatre arts endure as one of humanity's greatest achievements—speaking across centuries and civilizations. I want Woolly's bold voice to continue these critical conversations across cultures and between generations. So...through my estate I've planned for the future, mine and Woolly's."*

*—Donna Ari, Mammoth Forever*



# MAMMOTH FOREVER: A PLANNED GIVING INITIATIVE

We would like to thank the farsighted group of donors who have included Woolly Mammoth in their estate plans:

Donna Ari

Jim Asp & Perry Streidel

J. Chris Babb & James Martin

Susan Barrett

Nan Beckley

Elizabeth & Paul L. Friedman

Renee Gier

David Gorsline

Nancy A. Hartsock

Linette S. Hwu

Gene & Dale Kenney

Thomas M. Leahey

Karen Lefkowitz & Allen Neyman

Jean E. Osburn

Amy Phillips

Julie F. Rios

Evelyn & Scott Schreiber

Howard Shalwitz

Linda W. Sorkin

Marvin F. Weissberg

To learn more about how to make a planned gift, please contact our Development Department by calling 202-312-5276 or email us at [development@woollymammoth.net](mailto:development@woollymammoth.net)



*Dead Inside Scenic Design Model by Meghan Raham*



pepco<sup>SM</sup>

AN EXELON COMPANY



## Investing in Local Arts for All

Artists and performers fuel our imagination, inspiring us to dream bigger. We champion equitable access to the arts, partnering with organizations like the Woolly Mammoth Theatre Co. to ensure everyone can experience the vibrant local arts and culture Washington, DC has to offer.

[pepco.com](https://www.pepco.com)

© Potomac Electric Power Company, 2025



# DEAD Inside

WOOLLY  
HLOWWW